



Applications

Wall-hung WC pan support frame designed for use against flat walls and in corners

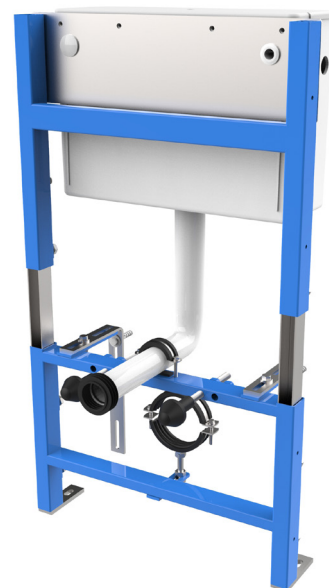
Ideal for most domestic and commercial applications.

Water Saving

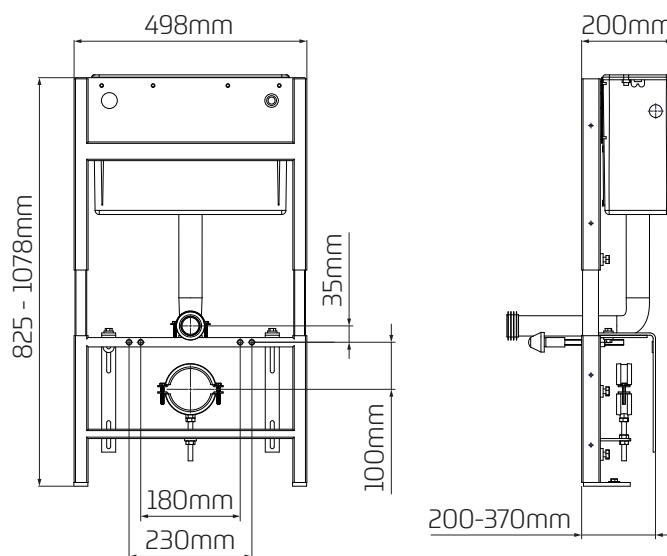
- ~ Provides 6/4 litre dualflush
- ~ 6 litre single flush also available
- ~ European Water Label Scheme approved
- ~ Supports BREEAM.

Features

- ~ Unique design enables frame height to be set between 825mm and 1078mm for unrivalled installation flexibility
- ~ Height adjustable
- ~ Legs adjust to offer WC pan height fixing flexibility
- ~ Wall and floor fixing brackets can be fixed through 180 degrees and 360 degrees respectively to simplify installation
- ~ Strong steel tubular section construction
- ~ Blue painted finish and zinc plated wall and floor brackets
- ~ Flushbend and WC pan connector clamps
- ~ Integral factory fitted Dudley Phantom cistern
- ~ Floor and WC pan fixing bolts included.



Dimensional Data



Technical Data

Operation	Lever
Inlet	Side
Outlet	Syphon
Fixing Orientation	Wall and floor fixed
Height Adjustment	MIN. 825mm - MAX. 1120mm
Load Capacity	Tested to 400kg
Product Code	334923