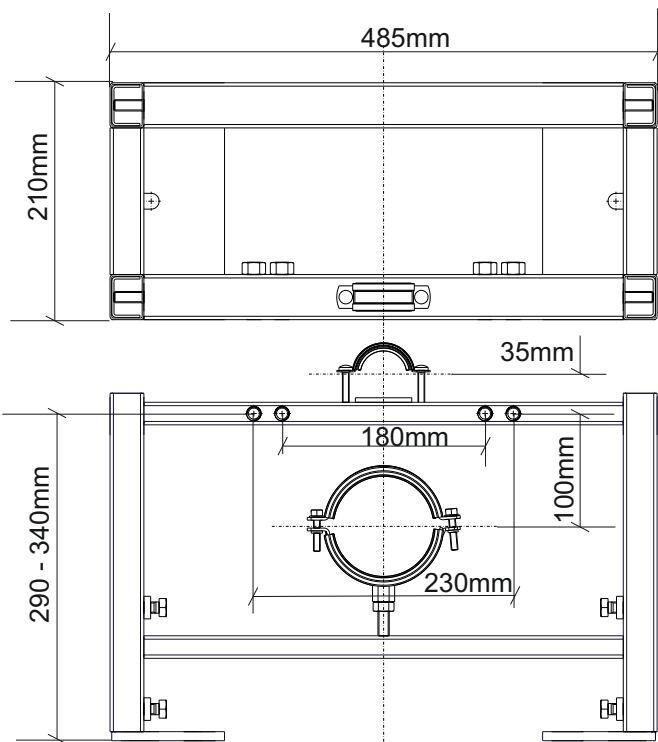
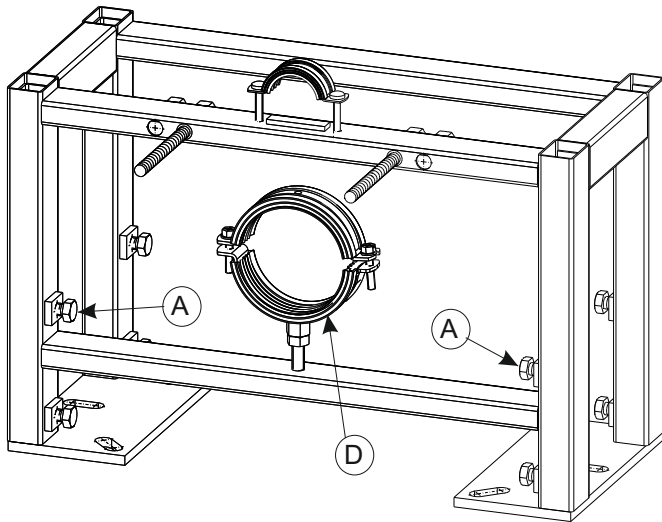


DUDLEY

ILLUSION FREESTANDA

A free standing frame specifically designed for wall hung pans.

INSTALLATION INSTRUCTIONS



Note.
Pan outlet connector and soil pipe seal
to be purchased separately.
Required diameter 90mm

1. Set frame height .

To adjust height of frame slacken off bolts holding adjustable legs in frame (A). Adjust the position of the legs so that the WC pan rim is 400mm above the floor level. Re-tighten the bolts clamping the legs into position.

2. Fixing to floor.

Attach frame securely to floor using the plugs, washers and hex head screws provided.

It is the responsibility of the installer to ensure that these fixings in the floor are strong enough to adequately support the load which will be applied to the pan in use.

3. Fitting pan connector.

Fit a pan connector to clamp (D) in a position to suit the pan being fitted. When in the correct position, complete plumbing of the soil piping.

4. Fitting pan.

Ensure M12 allthread protrudes sufficiently for correct and secure installation of the pan. See fig.1 for installation detail.

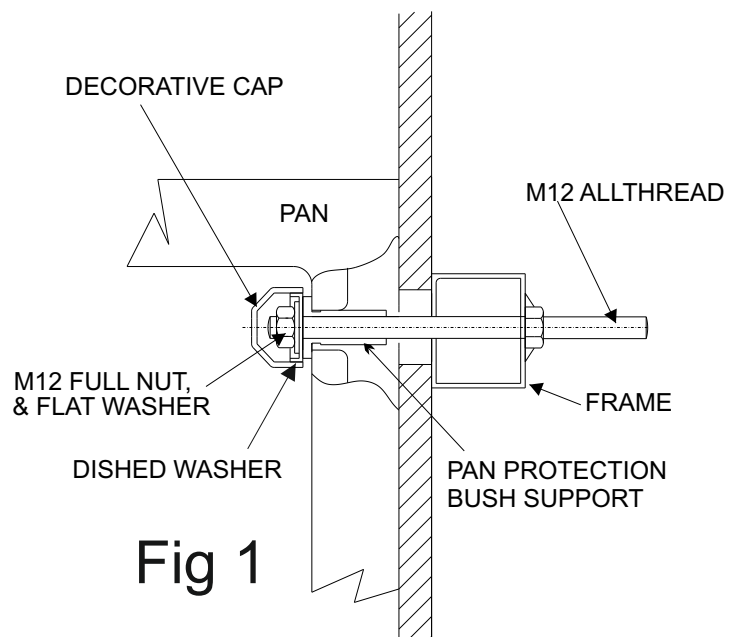
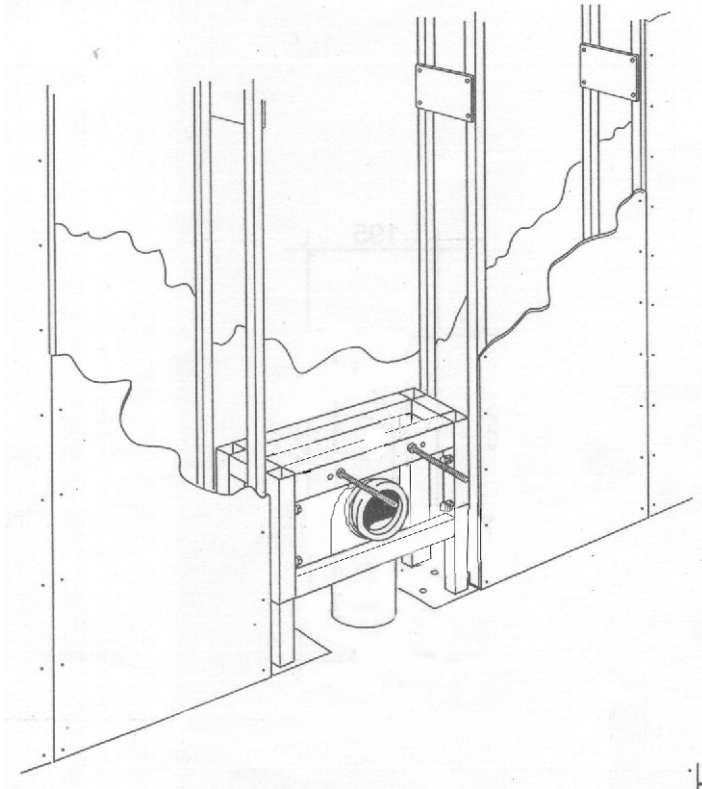


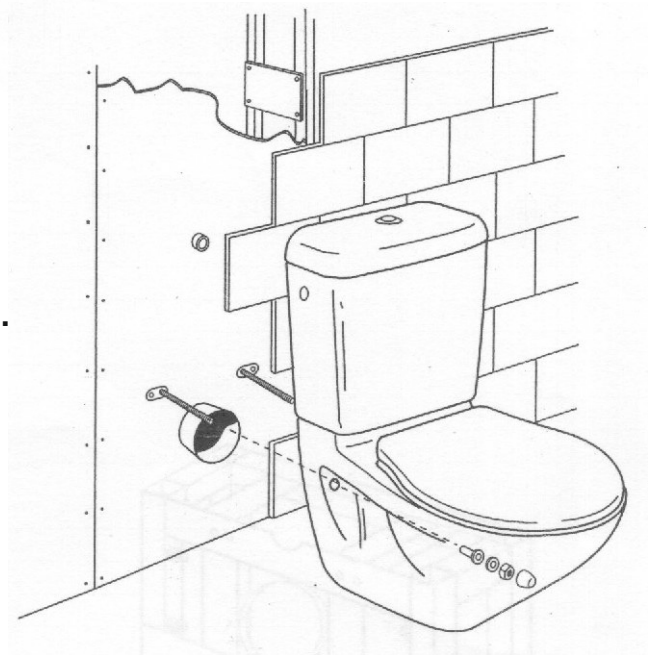
Fig 1

TYPICAL INSTALLATIONS



Pan only with cistern
mounted within wall linings.

With a close coupled cistern.



Thomas Dudley Ltd

PLASTIC CISTERN MANUFACTURERS

Dauntless Works, P.O.Box 28, Birmingham New Road, Dudley,
West Midlands, DY1 4SN

Telephone: 0121 530 7000 Fax: 0121 557 5345 E-mail: sales@thomasdudley.co.uk

TDCF 1374