

Dudley



ELECTROFLO
SOAP DISPENSER



INSTALLATION GUIDE



Scan this QR code, provide some feedback and be entered in our monthly prize draw.

T H O M A S
D U D L E Y



IMPORTANT NOTES

Remote control is an optional extra.

Installation of the transformer to be carried out, checked and commissioned by a qualified electrician.

During installation DO NOT expose the electronics to fluids, dust, dirt or damp.

Reccomended soap viscosity: 0-3800 CPS.

DO NOT use steel wool or cleaning agents containing alcohol, acid, abrasives, etc as this will cause damage to the surface. Use only soap and water and then wipe dry with a clean cloth or towel.

DO NOT place objects on top of sensor.

Contemporary

DO NOT install the sensor facing a mirror or any other infrared electronic system.

Leave sufficient space for all the components under the work top.

Horizon

Leave sufficient space for all of the components behind the wall and under the work top.

Keep in mind the location of the users hands, they should not interfere with the sensor when using the sink.

To prevent reflection issues keep a minimum distance of 300mm between the sensor and any other objects.

TECHNICAL DATA

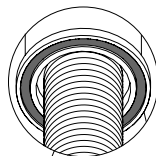
Capacity	1 Litre / 35.19 oz
Power Supply	Battery Box for 6 D-Cell Alkaline batteries or 12V transformer
Soap Viscosity	0-3800 CPS
Standard Discharge	1.4cc (customisable by optional remote control)
Sensor Range	30-100mm +/- 10mm (customisable by optional remote control)

1a CONTEMPORARY

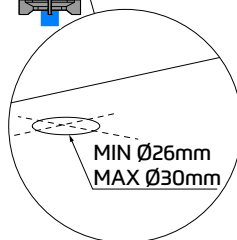


DO NOT
REMOVE
O-RING

32.5mm
MIN



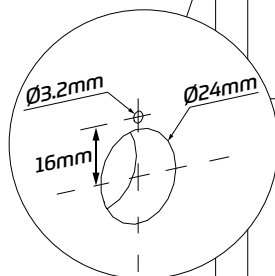
MAX
THICKNESS
50mm



1b HORIZON

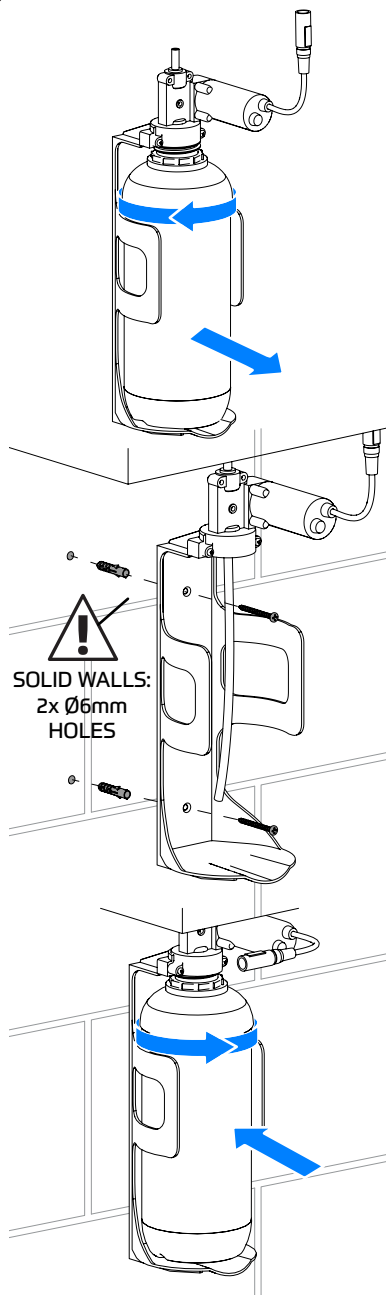


MIN
300MM

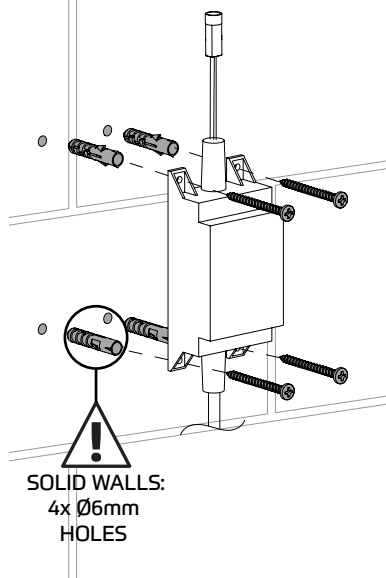


MAX
THICKNESS
55MM

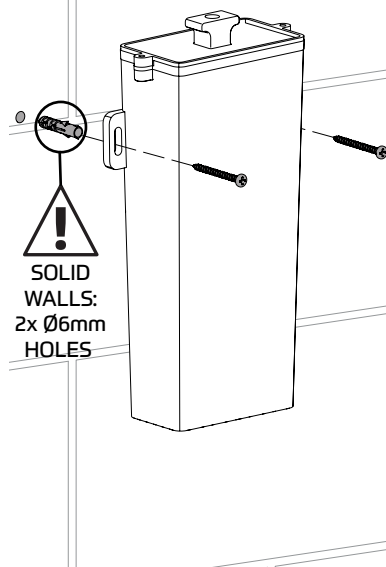
2

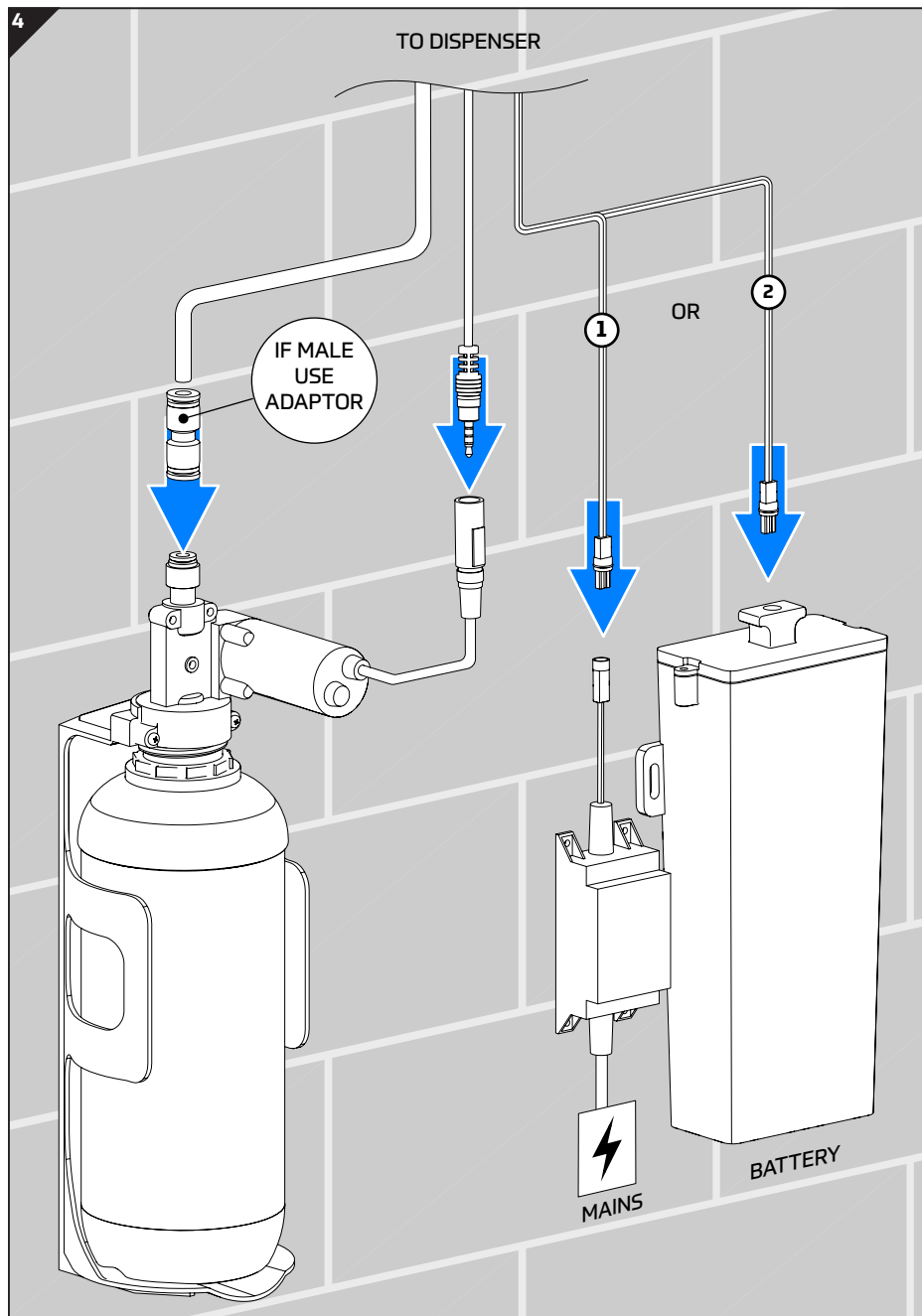


3a MAINS POWER

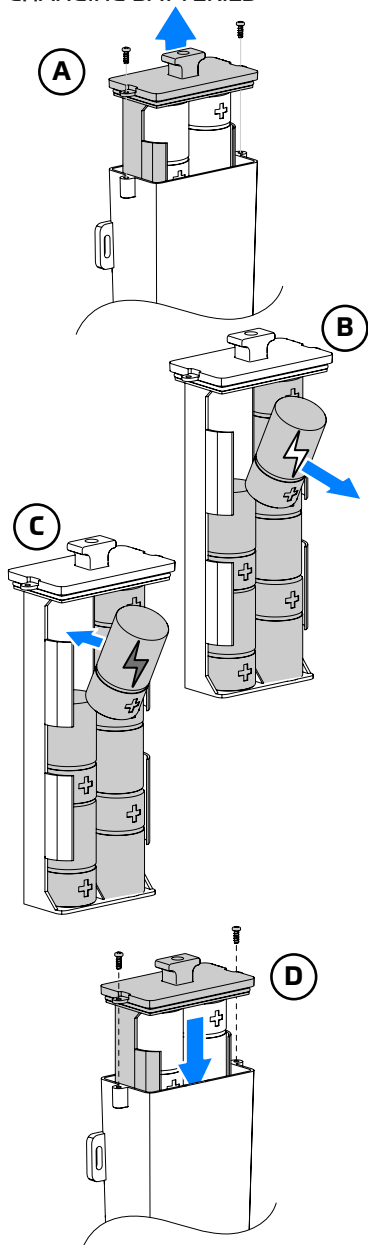


3b BATTERY POWER

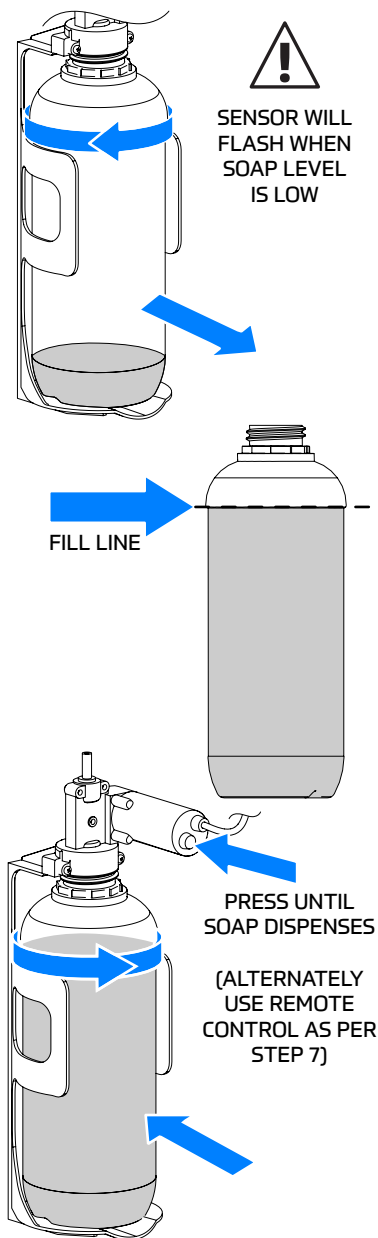




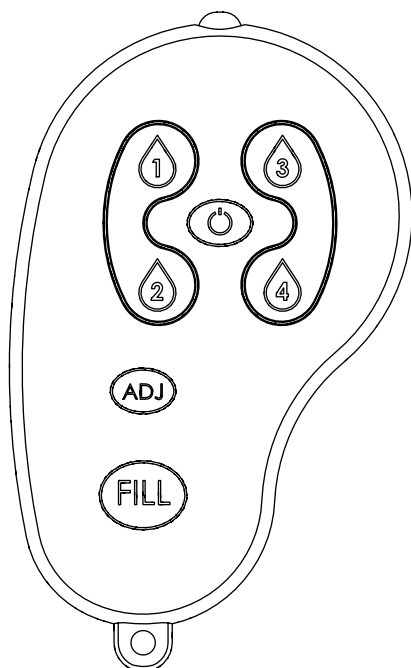
5 CHANGING BATTERIES



6 REFILLING SOAP DISPENSER



7 SOAP DISPENSER REMOTE CONTROL (PURCHASED SEPARATELY)



FACTORY SETTING

Resets to factory default.

Indication:

2 blinks of the red light in the sensor eye.

REMOTE FILL

Press **FILL** once the soap has been refilled (step 6) to allow pump to dispense soap.

The pump will run for 1 minute, if soap starts to dispense then press **FILL** to end refill.



TEMPORARY SHUT OFF

Press to disable soap dispenser for 1 minute. Press again to activate.

Indication:

Off - 2 fast blinks

On - 4 fast blinks



SOAP QUANTITY



0.2 - 0.4 cc*



0.7 - 0.9 cc*



1.2 - 1.6 cc*
(Default)



2.1 - 2.3 cc*

The 1-4 drop keys allow the user to choose the desired soap quantity. The soap quantity depends on the soap viscosity.

Indication: 2 blinks of the red light in sensor.

Soap quantities are estimates only

Note: The remote can be used on all electroflo Soap Dispensers.

Problem	Cause	Solution
Continuous or random discharge from the nozzle or pump housing	1) Connectors not fully inserted	The connectors should be inserted fully until white o-ring is not visible. Remove the o-ring if necessary. Keep dry.
	2) Reflection issue from other objects	Make sure no objects are obscuring the sensor. Make sure the sensor is not facing a mirror.
	3) Damaged pump due to high viscosity or debris in pipes	Replace the pump. Rinse warm water through the pipe and the body of the soap dispenser all the way through to the nozzle.
Soap not dispensing and pump is making sounds when sensor is activated	1) Soap tank is empty	Fill with soap with correct viscosity (0-3800 cPs).
	2) Soap dispenser has not been primed	Prime the soap dispenser by pressing the fill button on the optional remote or by pressing the refill button located at the bottom of the pump, until soap exits the nozzle.
	3) Damaged pump (discharge from housing)	Replace the pump.
	4) Debris or dried soap in the pipe or tank	Run warm water through the pipe, pump, and body all the way to the nozzle. Replace with soap of correct viscosity.
	5) High viscosity soap (>3800 cPs)	Note: Using the soap dispenser with high viscosity soap may cause permanent damage to the pump and shorten the life cycle.
	6) Bent pipes	Unbend or straighten the pipes.
	7) Connectors not fully inserted	The connectors should be inserted fully until white o-ring is not visible. Remove the o-ring if necessary. Keep dry.
	8) (Battery powered version only) Low battery	Replace batteries.

Thomas Dudley
295 Birmingham New Road
Dudley, West Midlands
United Kingdom
DY1 4SJ

t +44 (0)121 557 5411
f +44 (0)121 557 5345
e info@thomasdudley.co.uk
w www.thomasdudley.co.uk/plumbing

© 2025 TD_R326862_15838 Iss C

