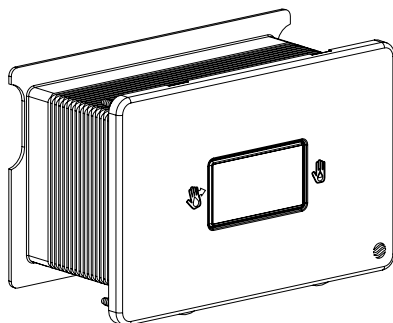
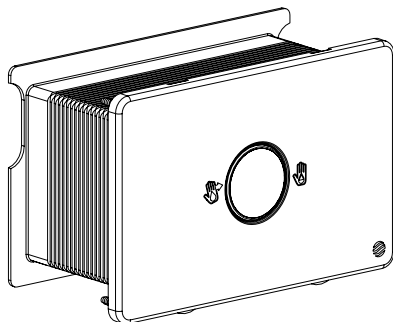


**Dudley**



**WAVE S1 & S2**  
TOUCH FREE FLUSHPLATE



Scan this QR code, provide  
some feedback and be  
entered in our monthly prize  
draw.

T H O M A S  
D U D L E Y



## IMPORTANT NOTES

Ensure the sensor is positioned to avoid obstruction at all times.

During installation do not expose the electronics to fluids, dust, dirt or damp.

Use either mains or batteries exclusively. DO NOT use together.

If used, installation of the mains adaptor must be carried out and checked by a qualified electrician.

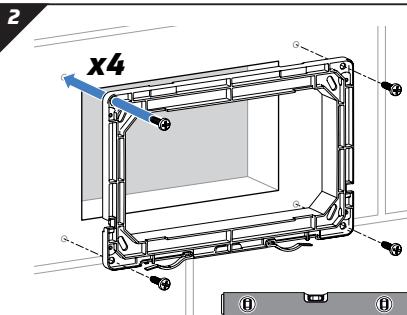
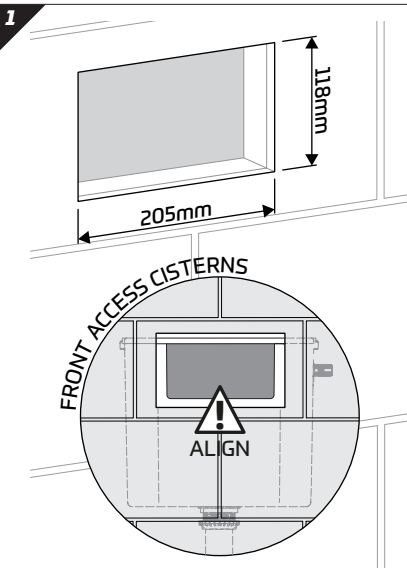
No after-market mains power packs to be used with this product. Use OEM supplied power pack only.

DO NOT kink or trim supplied air tubes.

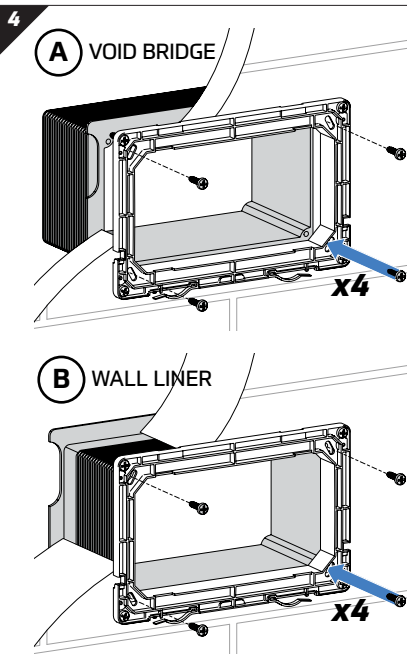
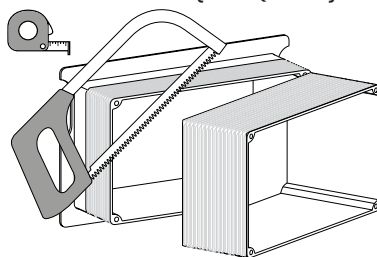
DO NOT use any cleaning agents on this product. Clean using a non-abrasive cloth and warm water only.

## TECHNICAL DATA

<b>Battery Supply</b>	4x 1.5V AA (not included)
<b>Mains Supply</b>	230V AC 50Hz
<b>Sensor range</b>	Up to 50mm

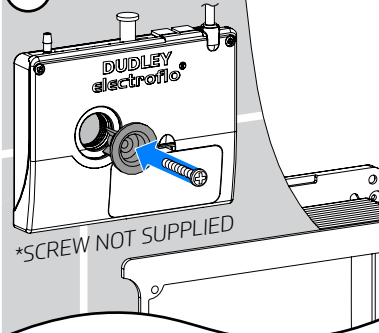


## 3 TUNNEL INSTALL (IF REQUIRED)

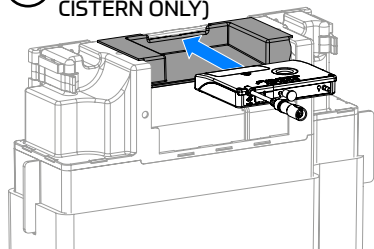


5

**A** FIX TO WALL

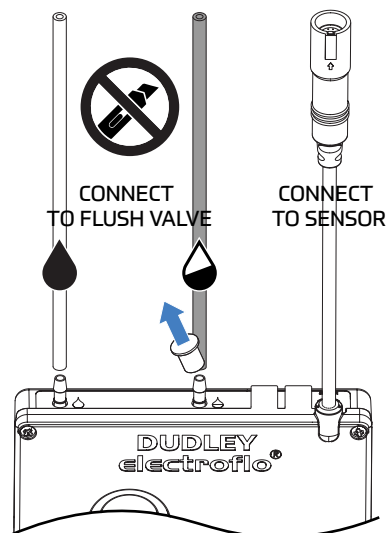


**B** MOUNTING TRAY (VANTAGE CISTERN ONLY)



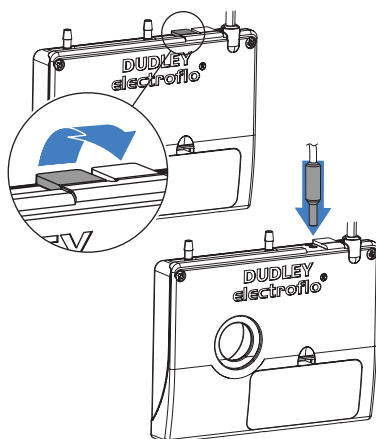
6

CONNECTIONS

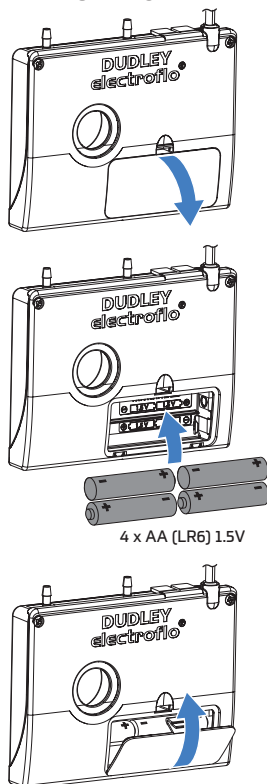


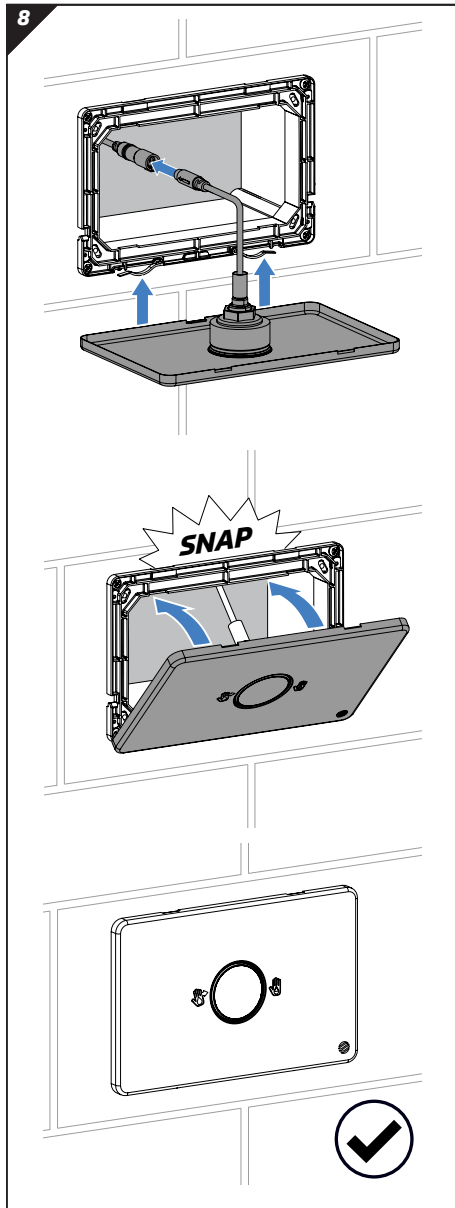
7

MAINS POWER-UP



BATTERY POWER-UP





© 2025 TD\_R326372\_13315 Iss B

**Thomas Dudley**  
 295 Birmingham New Road  
 Dudley, West Midlands  
 United Kingdom  
 DY1 4SJ

t +44 (0)121 557 5411  
 f +44 (0)121 557 5345  
 e [info@thomasdudley.co.uk](mailto:info@thomasdudley.co.uk)  
 w [www.thomasdudley.co.uk/plumbing](http://www.thomasdudley.co.uk/plumbing)

**9**

FULL FLUSH      REDUCED FLUSH

WAVE      HOLD

WITHIN 50mm OF SENSOR

INDICATION	LED COLOUR	STATUS
SOLID FLASH	BLUE	FULL FLUSH
SOLID FLASH	GREEN	REDUCED FLUSH
LIT FOR 30 SEC. AFTER FLUSH	RED	FILL DELAY
RAPID FLASH	RED	BATTERY LOW
SLOW FLASH	RED	SENSOR OBSTRUCTION

**10**

**Final Installation Checklist**

- ~ Check flush valve instructions for correct valve connection procedure.
- ~ Ensure air tubes are connected securely and routing is free from kinks and acute bends.
- ~ Check full and reduced flush operation.
- ~ Visit [thomasdudley.co.uk/plumbing](http://thomasdudley.co.uk/plumbing) for service & maintenance information.

T H O M A S  
 D U D L E Y

