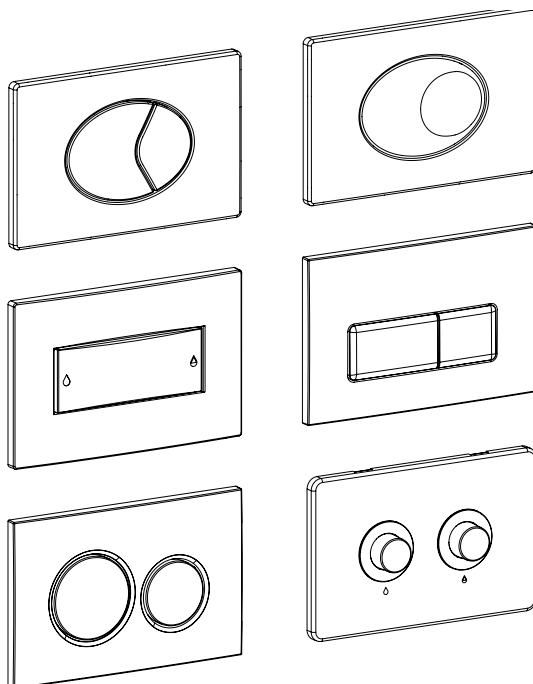


Dudley



FLUSH PLATES
DUAL FLUSH PNEUMATIC



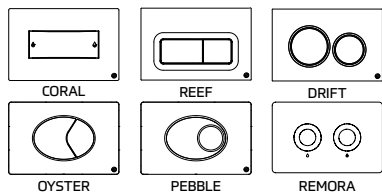
INSTALLATION GUIDE



Scan this QR code, provide some feedback and be entered in our monthly prize draw.

T H O M A S
D U D L E Y



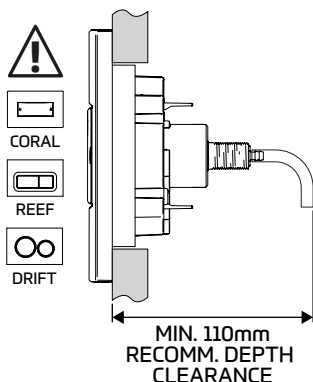
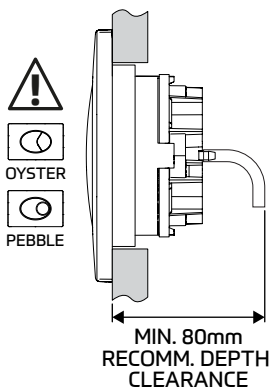


IMPORTANT NOTES

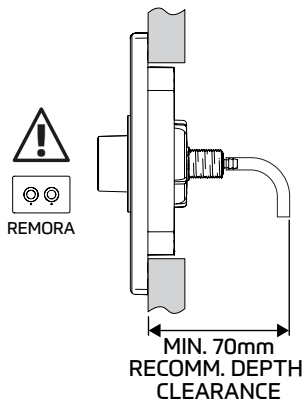
Do not use any cleaning agents on this product. Clean using a non-abrasive cloth and warm water only.

Mark out prior to installation to ensure adequate space and clearance for products.

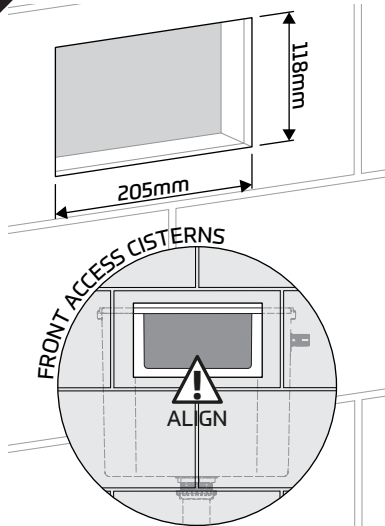
REFERENCE DIMENSIONS



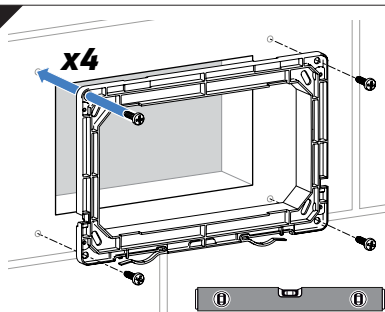
CONTINUED...



1

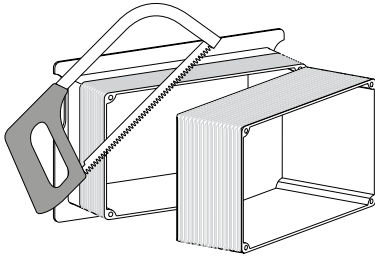


2

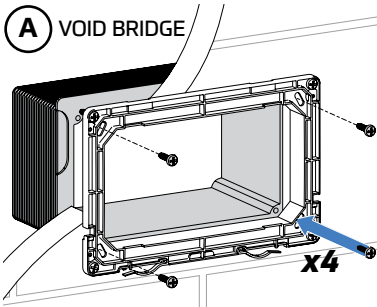


3

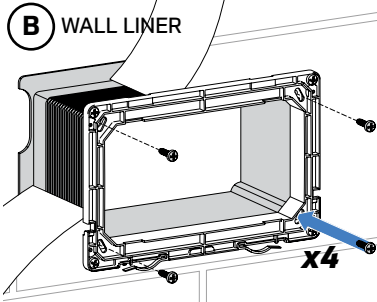
TUNNEL INSTALL (IF REQUIRED)



A VOID BRIDGE

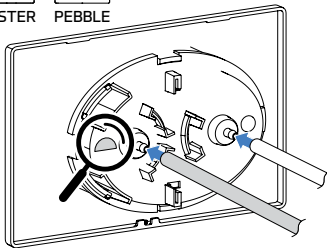


B WALL LINER



4

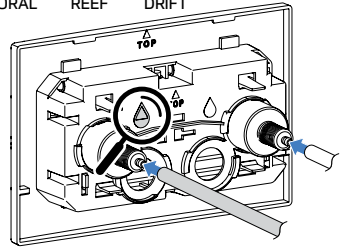
OYSTER PEBBLE



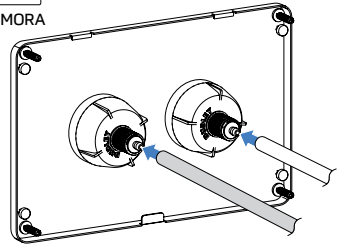
4

CONTINUED...

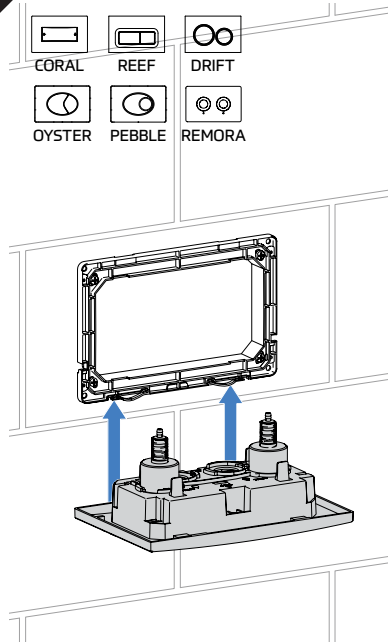
CORAL REEF DRIFT



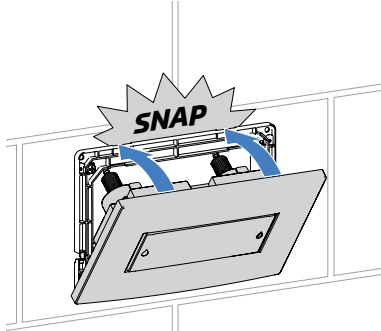
REMORA



5

CORAL REEF DRIFT
OYSTER PEBBLE REMORA

5 CONTINUED...



CORAL



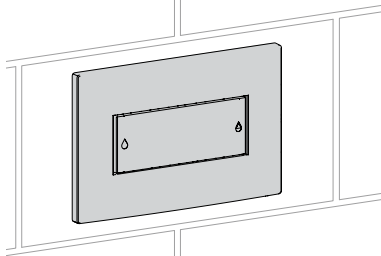
REEF



DRIFT



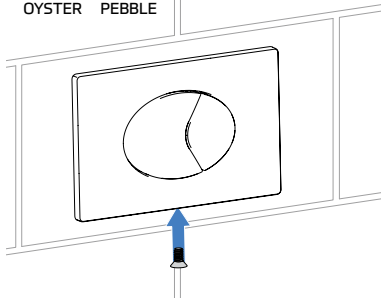
REMORA



OYSTER



PEBBLE



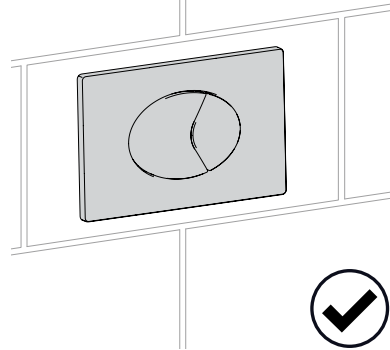
5 CONTINUED...



OYSTER



PEBBLE



6

Final Installation Checklist

~ Check flush valve instructions for correct valve connection procedure.

~ Ensure air tubes are connected securely and routing is free from kinks and acute bends.

~ Check full and reduced flush operation.

~ Visit thomasdudley.co.uk/plumbing for service & maintenance information.

© 2025 TD_SISLF323195_11282 Iss K

Thomas Dudley
295 Birmingham New Road
Dudley, West Midlands
United Kingdom
DY1 4SJ

t +44 (0)121 557 5411
f +44 (0)121 557 5345
e info@thomasdudley.co.uk
w www.thomasdudley.co.uk/plumbing

T H O M A S
D U D L E Y

